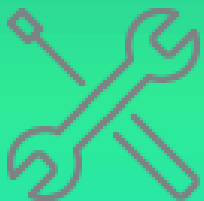




# Product Brief

## BRIDGIT™ Adapter



CONNECT



INSTALL



MEASURE

# PRODUCT OVERVIEW

At ECOLINQX™ we are committed to help customers evaluate, design, and integrate the BRIDGIT™ family of products for their high-speed, IP based communication needs through a comprehensive set of tools, materials, and technical resources available to our customers.

The scope of this document is to provide a guide on how to evaluate the HD-PLC technology, its performance in real-world scenarios, as well as getting familiar with the BRIDGIT Adapter, and the feature set offered by BRIDGIT System-on-Module.

The BRIDGIT Adapter is provided as part of our BRIDGIT development package which includes all the hardware, software, and documentation to easily set-up and evaluate the functions, features and performance of our BRIDGIT™ SoM (System-on-Module) under various conditions and configurations.

In order to design and integrate the BRIDGIT™ SoM into your specific application, refer to the BRIDGIT™ SoM datasheet and other related reference documents and tools available from ECOLINQX to make your integration easier and faster.

Please contact ECOLINQX™ at [support@ecolinqx.com](mailto:support@ecolinqx.com), or your local ECOLINQX™ representative for more information.



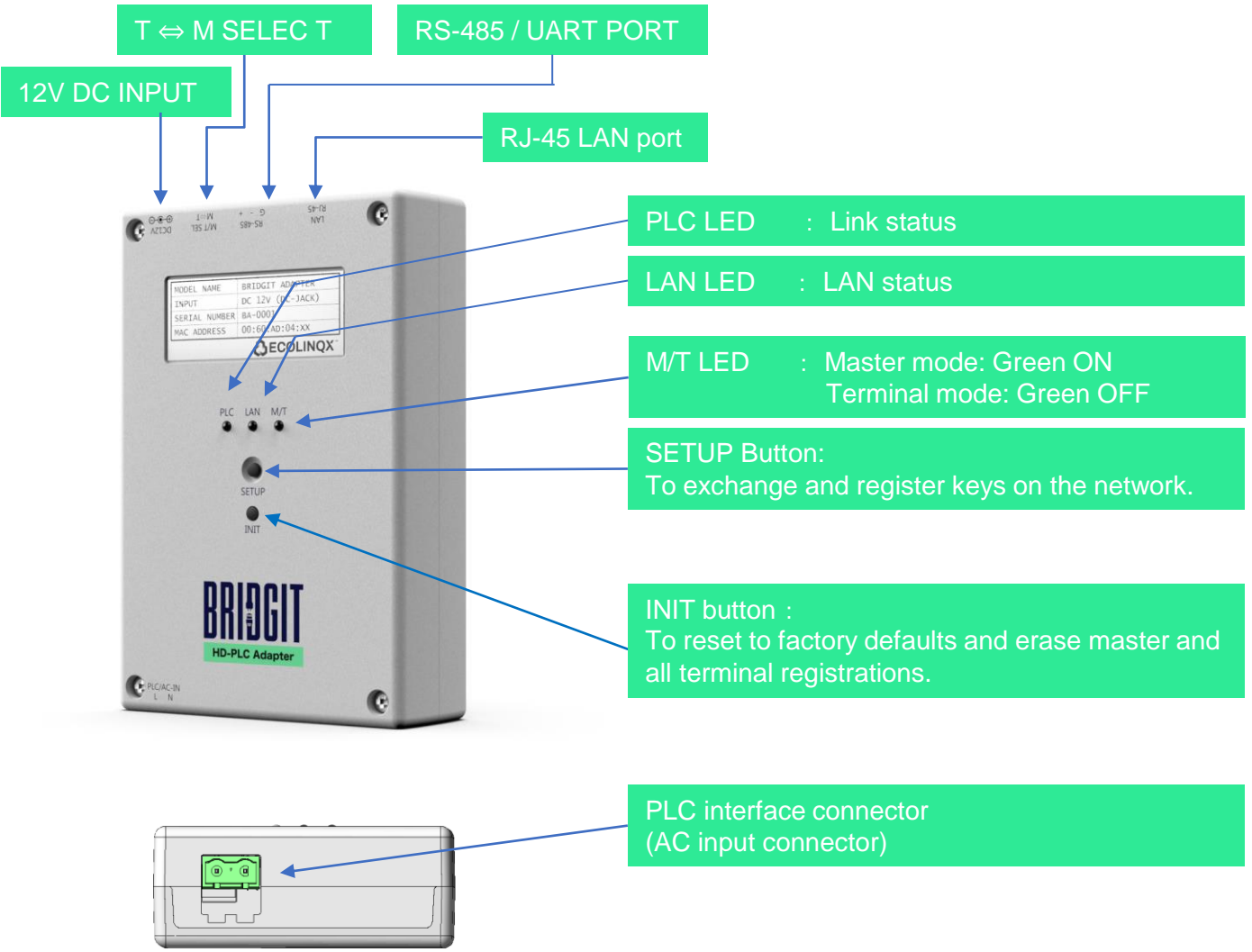
## About BRIDGIT Adapter's Configurations

BRIDGIT™ comes in two versions, “Hopper” and “Sprinter”. Hopper is designed for long-range communication whereas Sprinter is for high-speed.

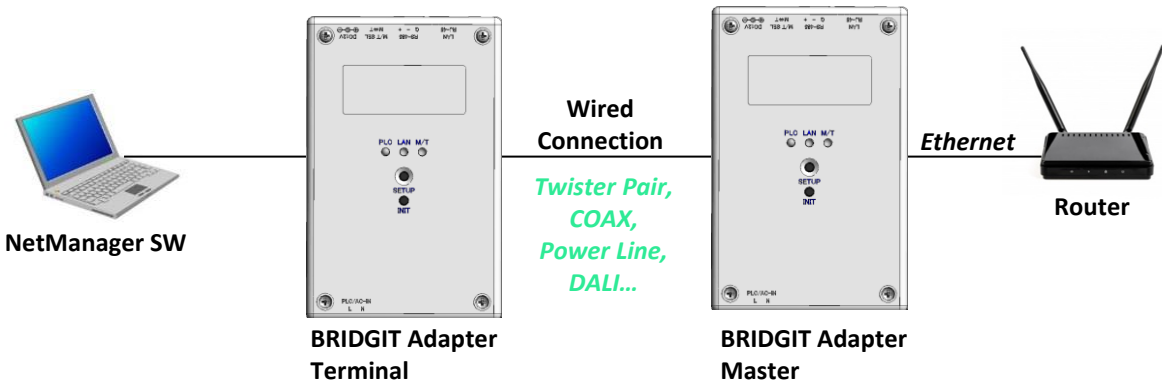
Using the same hardware design, customers can change between the two variations by just changing the firmware, giving them a wider range of applications to address. Contact one of ECOLINQX support staff for more details.

HOPPER	SPRINTER
Speeds up to 320Mbps (PHY)	Speeds up to 500Mbps (PHY)
Supports up to 1024 nodes	Supports up to 16 nodes
Free Topology / 10-hop MESH CMSR	Free Topology
CSMA/CA	TDM/DVTP
FEC: RS/CC, LDPC	FEC: RS/CC, LDPC
Internet-of-Things/Command, control, and monitoring of Remote Devices	HD video transmission and LAN

# Getting to Know the BRIDGIT™ Adapter



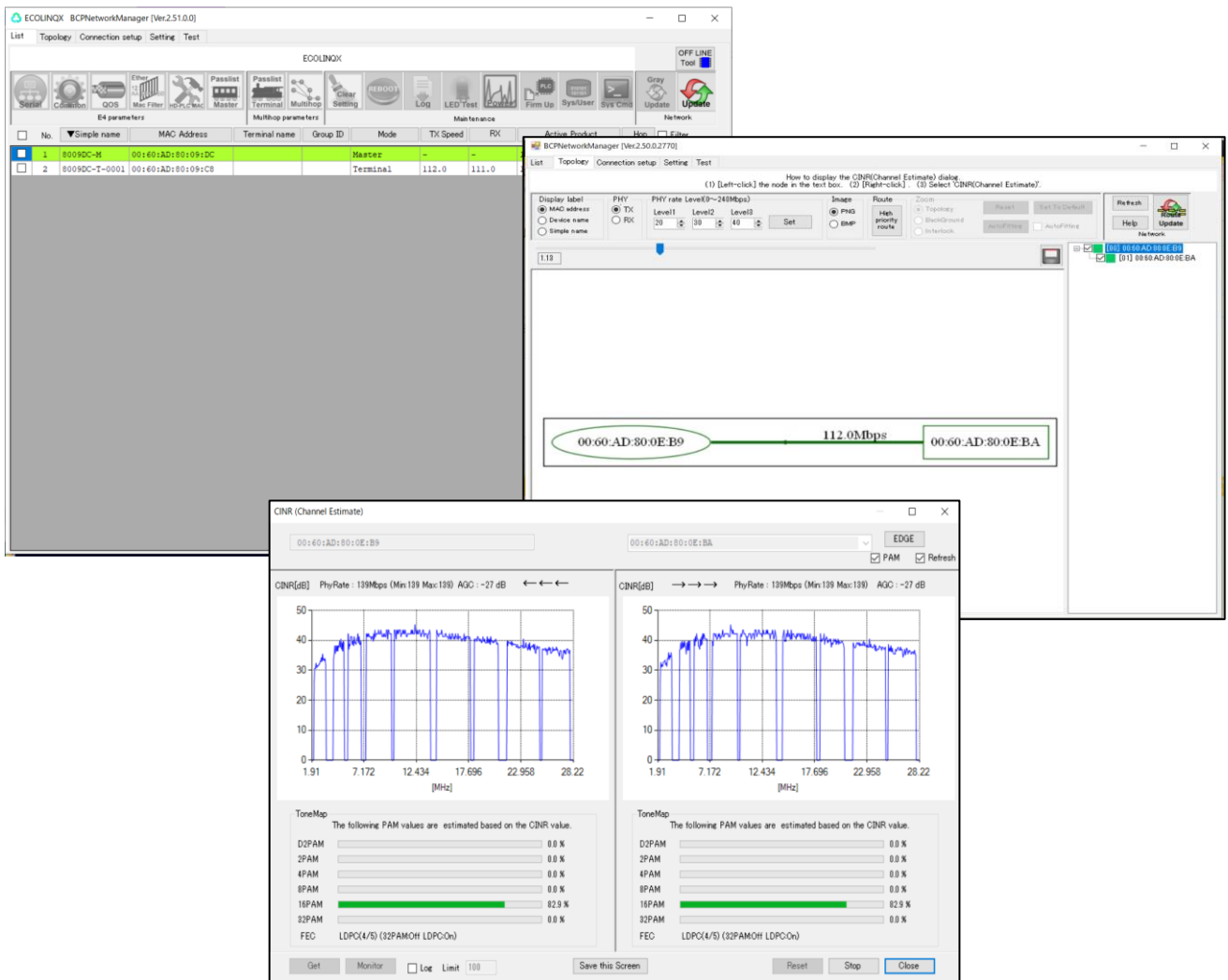
## Quick Setup:



# NetManager SW Suite

The BRIDGIT Network Manager software suite, included in the kit, provides a comprehensive management toolbox, to quickly setup, configure, monitor, and troubleshoot complex networks.

- Automatically builds and displays network topology
- Setup, and Monitor all devices on the network
- Display TX/RX PHY rate, CINR, AGC and more
- Microsoft Windows 10 Professional



# Copyright and Legal Disclaimer

© ECOLINQX™ Corporation, 2022.

ECOLINQX™ Corporation provides these evaluation devices under the following **AS-IS** conditions:

ECOLINQX™ Adapters are intended for **ENGINEERING DEVELOPMENT OR EVALUATION PURPOSES ONLY** and are not for commercial use. The Adapters are not fault-tolerant and are not designed or manufactured with protective considerations, including but not limited to product safety measures typically found in finished commercial goods. As prototypes, the Adapters do not fall within the scope of the European Union Directive on electromagnetic compatibility. Also be aware that the Adapters may not be regulatory compliant, or agency certified (FCC, UL, CE, etc.).

The Adapters have **110/220VAC POWER DIRECTLY CONNECTED TO THEIR CIRCUITS, which can cause PERSONAL INJURY, DEATH OR PHYSICAL DAMAGE**. Therefore, caution should be exercised when testing these devices. The user must be a skilled person in the practice and art of high-voltage circuitry in order to utilize the circuits in the Adapters. It is highly recommended that the user have qualifications or certificates for handling 110/220VAC power, and **COMMON SENSE IS ENCOURAGED**. The user agrees not to use the Adapters in any situation where damage or injury to persons, property or business could occur. Furthermore, the Adapters are **NOT FOR RESALE OR COMMERCIAL USE AND MUST BE STRICTLY OPERATED IN A WELL-CONTROLLED LABORATORY ENVIRONMENT**.

**THE USER ASSUMES ALL RESPONSIBILITY AND LIABILITY FOR PROPER AND SAFE HANDLING OF THE Adapters. THE USER RELEASES MCC FROM ALL CLAIMS ARISING FROM THE HANDING OR USE OF THE Adapters.**

This notice contains important safety information regarding handling the Adapters. For further safety concerns, please contact ECOLINQX's application engineering department at [support@ecolinqx.com](mailto:support@ecolinqx.com).

## Usage Notes

1. Irrespective of the contents of this document, no warranties of any kind are provided regarding the operation of this design and production support tool.
2. The contents of this document are subject to change without notice. In addition, the operating characteristics of this product might differ depending upon the firmware version. Please check the firmware version prior to use.
3. When exporting or providing the product and technical information in this document to non-residents, please be sure to observe the laws of the countries in question, particularly with respect to export safety assurance controls.

## Important Notice

At ECOLINQX™ we are committed to help customers evaluate, design, and integrate the BRIDGIT™ family of products for their high-speed, IP based communication needs through a comprehensive set of tools, materials, and technical resources available to our customers.

The development package includes the hardware, software, and documentation to easily set-up and evaluate the functions, features and performance of our BRIDGIT™ SoM (System-on-Module) under various conditions and configurations. In order to design and integrate the BRIDGIT™ SoM into your specific application, refer to the datasheet and other reference documents and tools available from ECOLINQX to make your integration easier and faster.

Please contact ECOLINQX™ at [support@ecolinqx.com](mailto:support@ecolinqx.com), or your local ECOLINQX™ representative for more information.



## ADDITIONAL INFORMATION

For product information and support, contact us at:  
[support@ecolinqx.com](mailto:support@ecolinqx.com)